



To Calhoun Rural Agricultural Junior High School

Battle Creek, Michigan

OPEN HOUSE

2:00 to 5:00 p.m.

October 10, 1954

We, the members of the Board of Education of the Calhoun Rural Agricultural Schools wish to express our sincere appreciation to the people of the district whose united efforts have made this building a reality; for their valuable assistance during every phase of our building program we especially wish to thank the members of the Citizens Committee. Recognizing our responsibility to the community as their elected representatives, we shall continue to work toward a better education for all of our children.

Board of Education.

Since schools are more than buildings and curricula are more than class schedules this school was designed for a program to meet specific needs in the development of Junior High students.

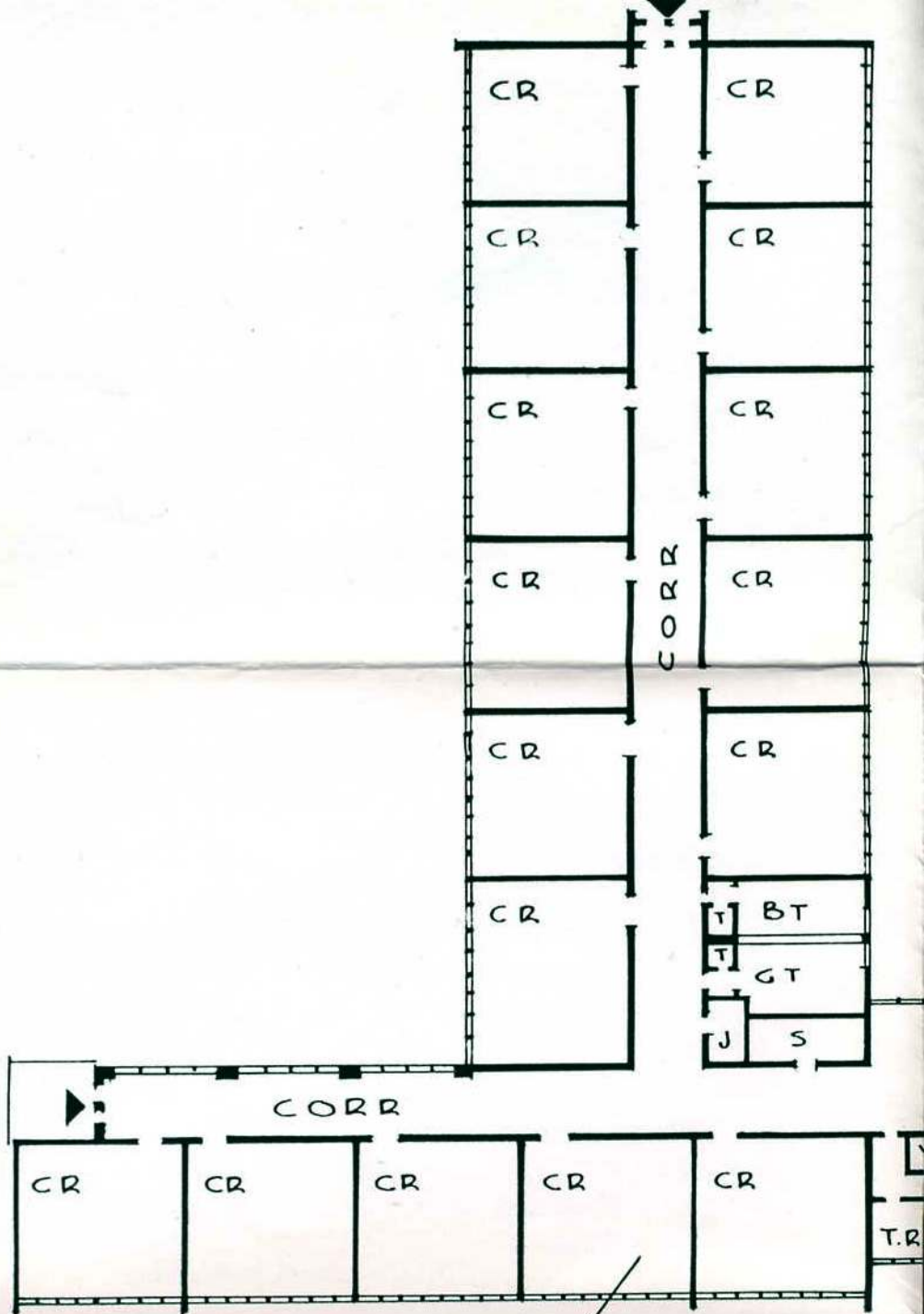
Educational Research shows that our boys and girls are in a critical transition period between childhood and adulthood.

Characteristics and needs of this group demand:

- that they have a diversified program that will enable them exploration of a great many areas;
- that they have careful supervision;
- that they have opportunities for selection;
- that they participate in pupil planning.

We believe that our fused program provides needed security and careful supervision. Our activities program gives an opportunity to select, and exercise freedom. The total program offers opportunities for wide exploration. Consideration for the individual is the basis for our program.

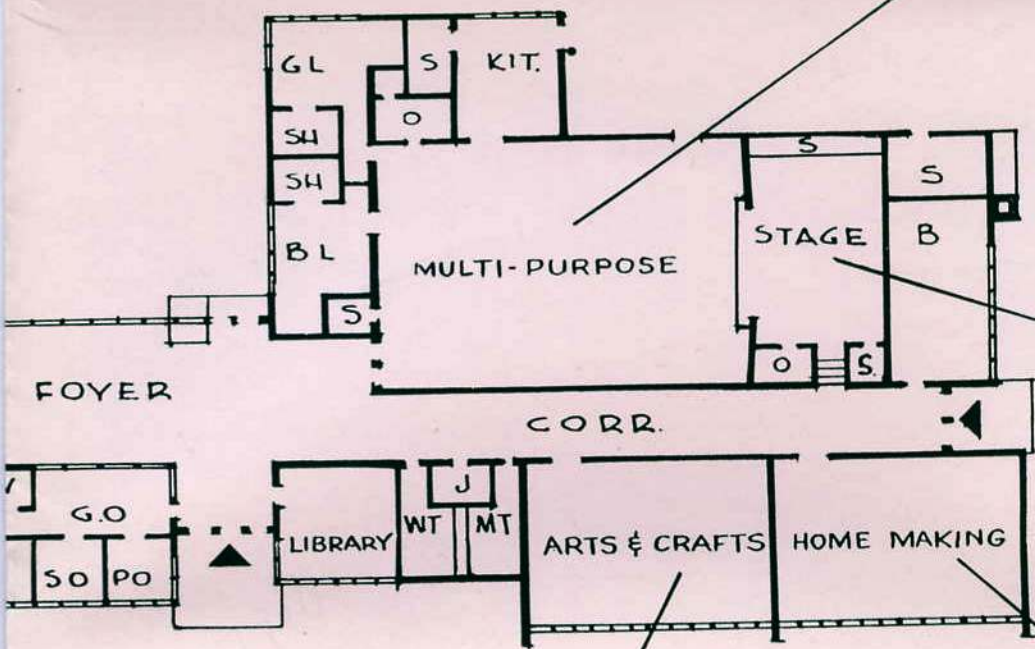
Cooperative planning by parents, students, school staff, and architects enable this philosophy to be achieved in this building.



TYPICAL CLASS HOMEROOM

Features of Our Building:

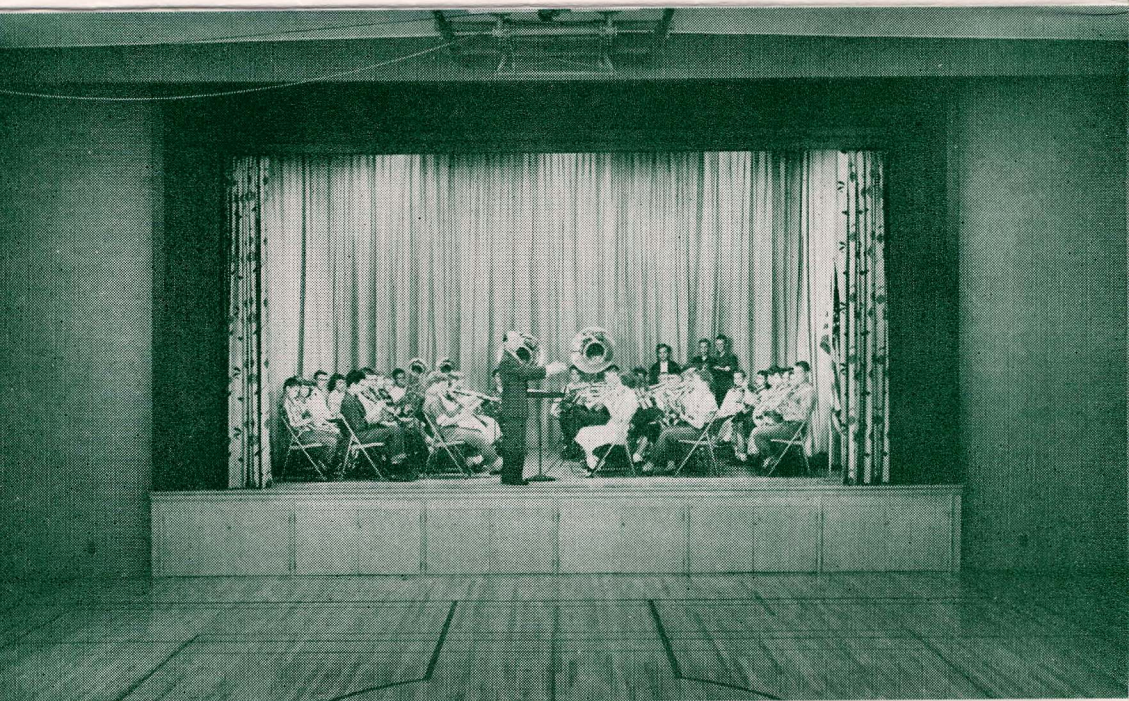
- 16 bilaterally lighted classrooms, serving as homerooms, ample storage, sink and drinking fountain in each.
- Complete Arts and Crafts Shop for woodworking, ceramics, painting, leather and metal work, plumbing, electricity, etc.
- Complete homemaking laboratory, containing unit kitchens, laundry, clothing area, home living area, fitting room, etc.
- Band and Music Room serves as stage, utilizing a soundproof folding partition, space for instruments, uniforms and office.
- Multi-Purpose Room serves as auditorium, gymnasium and cafeteria, with folding in-wall tables, adjoining kitchen. Boys' and girls' locker rooms. Physical Education office.
- Main Lobby used as gathering place for students, noon hour activities, conference area and community meeting room.
- Library has space for 2,500 books. Book carts serve to bring the library to the classrooms. Special facilities for audio-visual aids, filing and storage.
- Office suite for General Office, principal, superintendent and teachers' room.
- One story construction of expansible design, using brick and stone exterior, cinder block and glazed tile interior. Low pressure steam heating with unit ventilators in all classrooms.
- Cost of Building — \$419,383.47, including General Construction, Heating, Plumbing, Ventilating, Electrical and Architectural Fees. Includes driveways, sidewalks and grading around building.



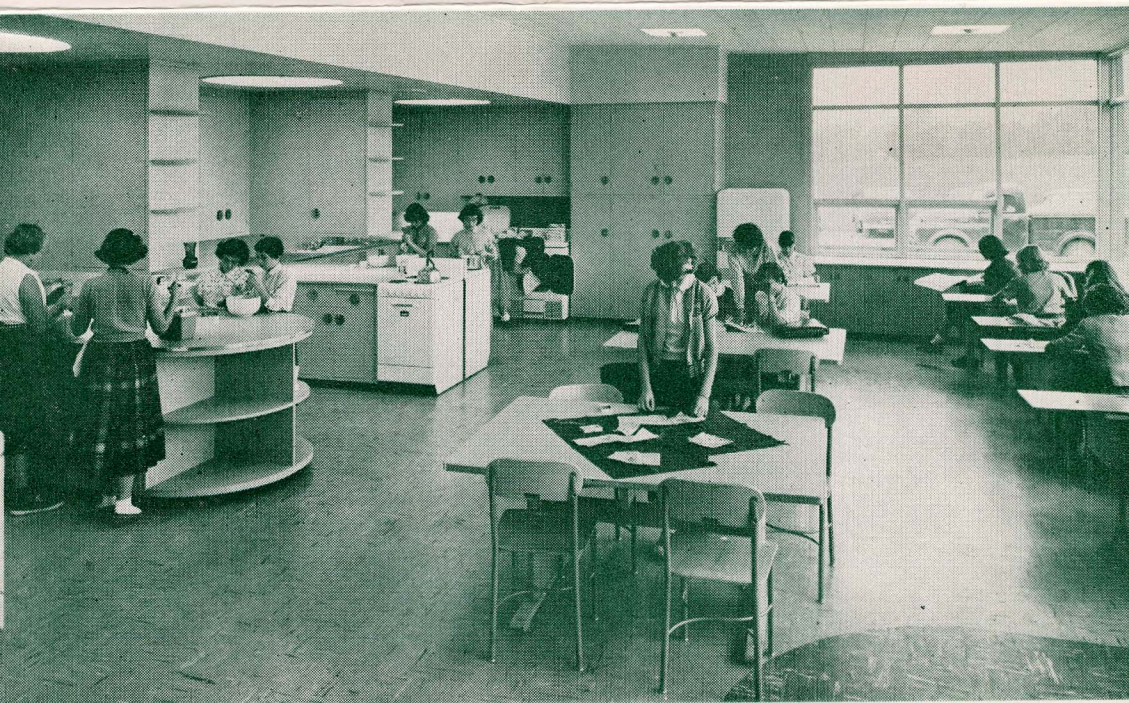
ARTS AND CRAFTS ROOM



MULTI-USE ROOM



BAND AND MUSIC ROOM



BOARD OF EDUCATION:

Robert Johnson, President
D. Paul Steele, Vice President
Martha G. Fruin, Secretary
Warren Beebe, Treasurer
Guy Morgan, Trustee

ADMINISTRATION:

Howard G. Nunn, Superintendent
Kenneth McLaughlin, Principal

ARCHITECT:

Guido A. Binda, Architect, and Associates
Battle Creek, Michigan

CONTRACTORS:

Phelps-Wagner Builders, Battle Creek, Michigan
Hunter-Prell Company, Battle Creek, Michigan
Union Electric, Inc., Battle Creek, Michigan